



Stephen Gould

Introduces

The Smart City Solution



Stephen Gould

BE SEEN - BE CONNECTED - BE SAFE

The ***GigaTera IT Convergence /Smart Street Lamp technology*** which is revolutionizing the entire LED Street Lighting Industry.

The new and ***Patented Convergence LED Street Lighting System*** combines high quality Samsung LED chips with WIFI, HD 360° Cameras and 5G small cell / RF telecommunication nodes, All-In-One.

This revolutionary technology is transforming the traditional LED street lamp into a ***Public Safety and Security Guardian*** which will install security and safety on the roads for our citizens, communities, neighborhoods, airports, college campuses, law enforcement and fire department.



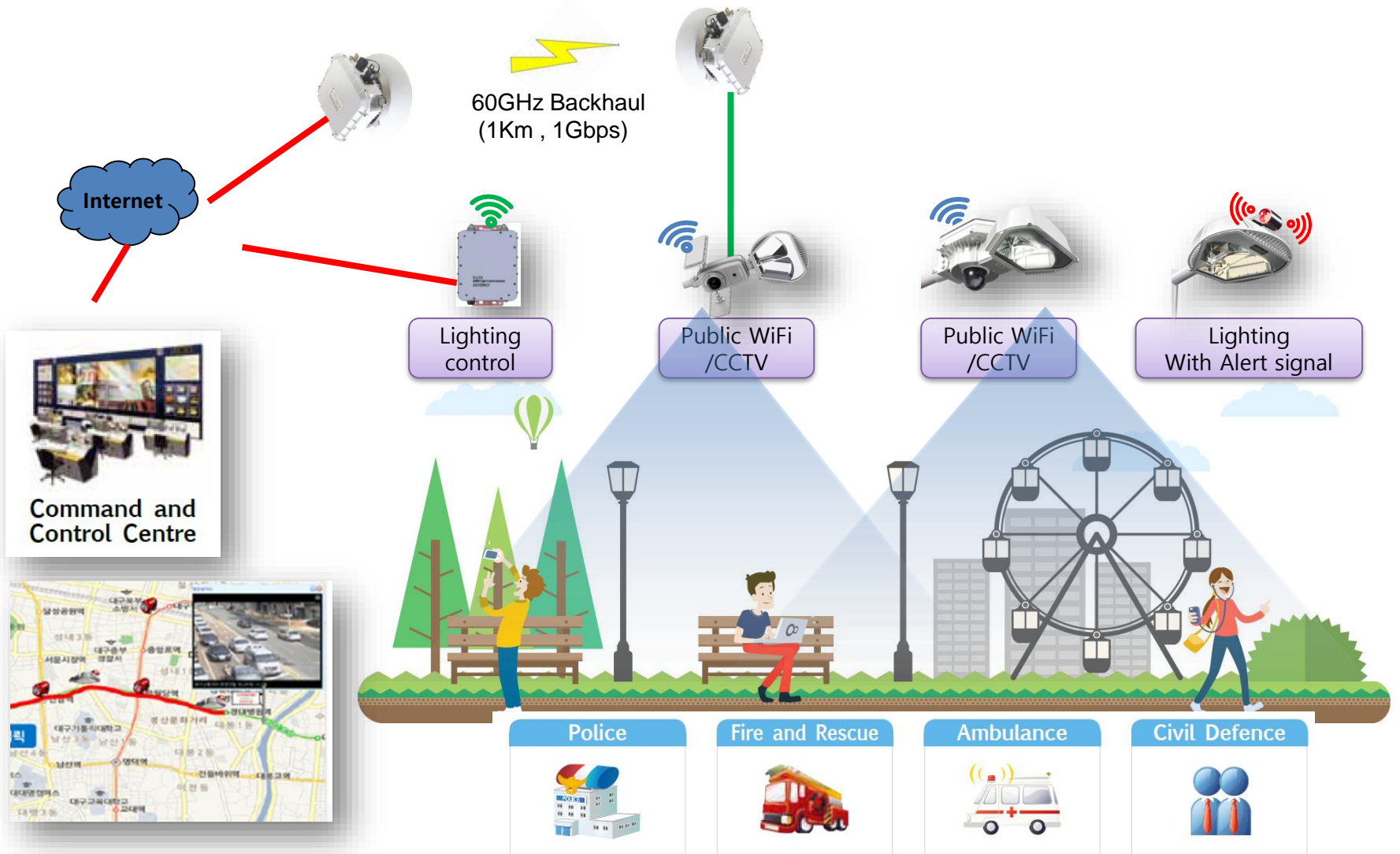
The Best Smart Street Light Awards

Granted for the GigaTera Convergence Technology by US Department of Energy.

SPES-X SECURITY STREET LIGHT



Stephen Gould



RED / BLUE color flashing system to prevent crime and assault

Alert service to reduce and prevent crime in crime ridden areas



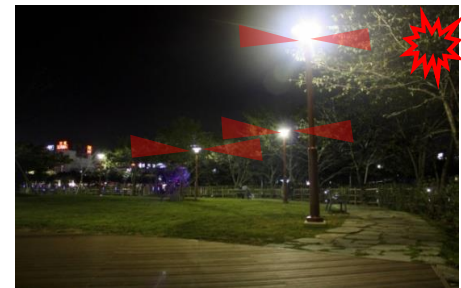
Event Occur
• Emergency bell at the site



Police dispatch
• Action by police



Alert Activate
• Alert Activation
- Blinking RED



Discern (Control center)
• Discern with CCTV
- location of emergency bell



Road Safety / Security / Energy Savings / Internet-Public WIFI

Safety Solution

- Alert for Accidents
- Natural Disasters
- Secure Pathway to sites



META-Whistle

Security Solution

- CCTV with LED
- Bright for Surveillance
- Clear view at Night



SPES-Seta

Internet

- Public WiFi Service
- Better Signal



SPES-X

Energy Saving

- Eco-Friendly
- Energy saving
- Less carbon emission

Varieties of color combinations used in emergency situations



Transmit video data of the site.



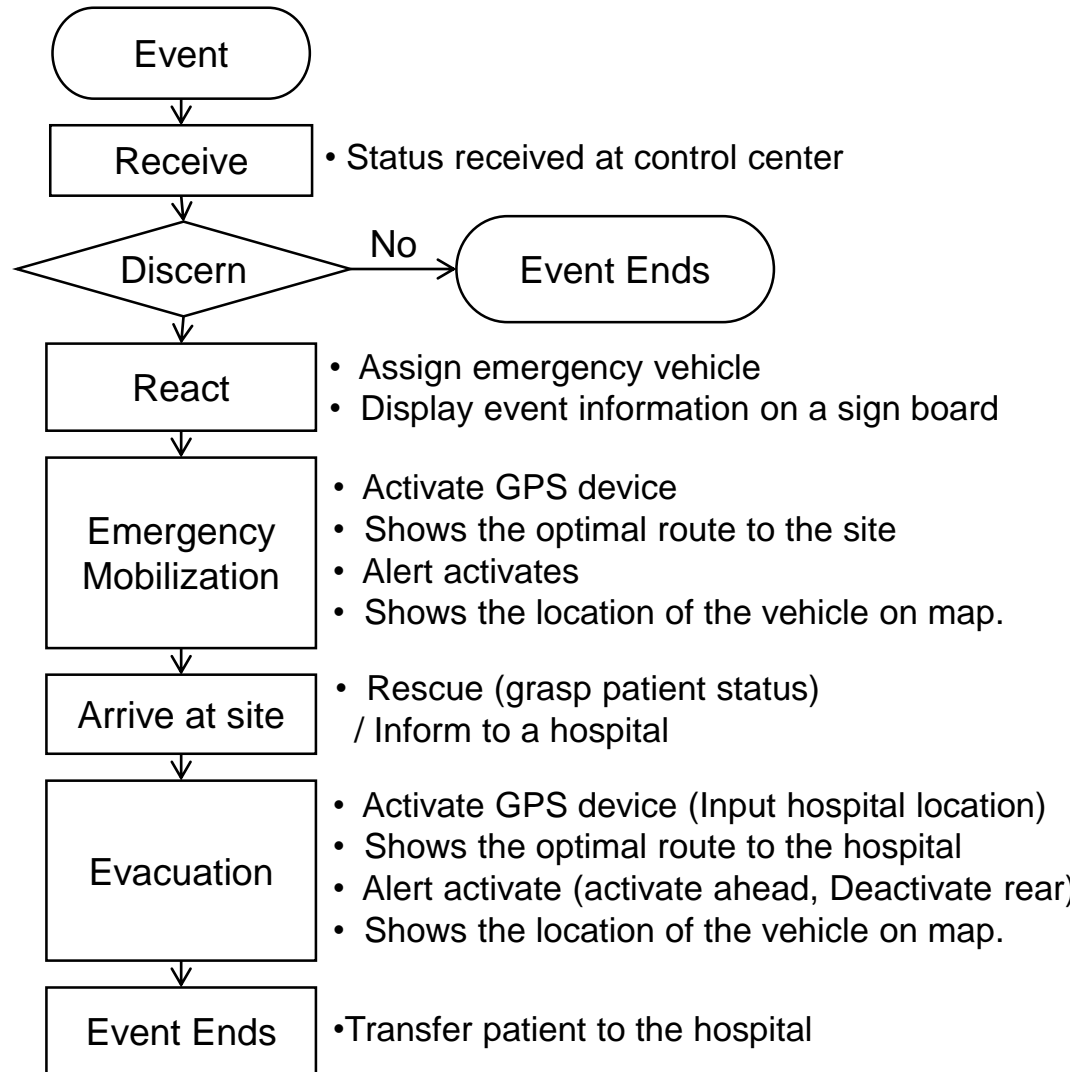
Viewing the data



Emergency Alert

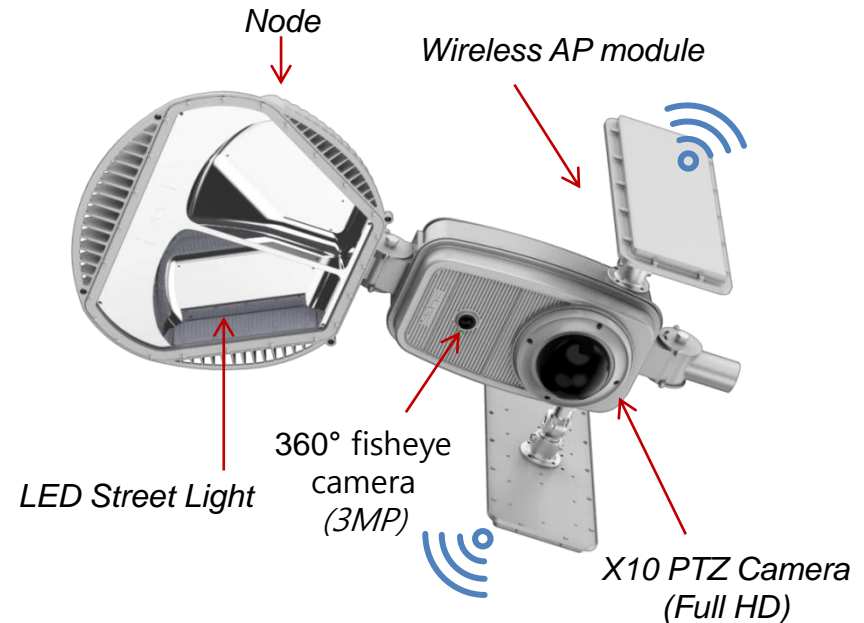


A lifesaving service through visually alert systems



Component	Functions
SPES-X LED	• Minimum 70% energy saving compared to conventional lights
CCTV Camera	• 10 X Optical Zoom, Full HD resolution for 360° fisheye for better recognition of objects
Various Sensors	• Customized sensor can be applied for various functionalities
Wireless AP	• Live streaming of video to control center using wireless technology

- Flexibility on choosing LED luminary for light with SPES-X
- High efficiency (125lm/W)
- High performance Full HD PTZ IP Camera (10X optical) & fisheye camera for 360° view.
- Supports wire and wireless communication
- Smart monitoring with VMS (Video Management System)



Component	Functions
SPEs SETA LED	• 70% energy saving compare to conventional lights
CCTV Camera	• 10 X Optical Zoom, Full HD resolution for better recognition of objects
Various Sensors	• Customized sensors can be applied for various functionalities
Wireless AP	• Live streaming of videos

- Converged with CCTV, LED street light and AP
- ICT AWARDS
- High efficiency (125lm/W)
- High performance Full HD PTZ IP Camera (10X optical zoom)
- Supports wire and wireless communication
- Smart monitoring with VMS (Video Management System)



Component	Function
META LED Street Light with Whistle	<ul style="list-style-type: none"> • High-efficiency LED Street Light measuring 130 lm/w • Minimum 70% energy saving compared to conventional lights
Whistle System	<ul style="list-style-type: none"> • Four color ALERT functions for different safety announcements



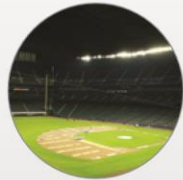
- Reduced glare
- No light pollution
- High efficiency (130 Lm/W)
- Input voltage: 100~277V
- IP66 rate
- Four different color ALERTS for safety

City Surveillance System Diagram

City Surveillance System Diagram



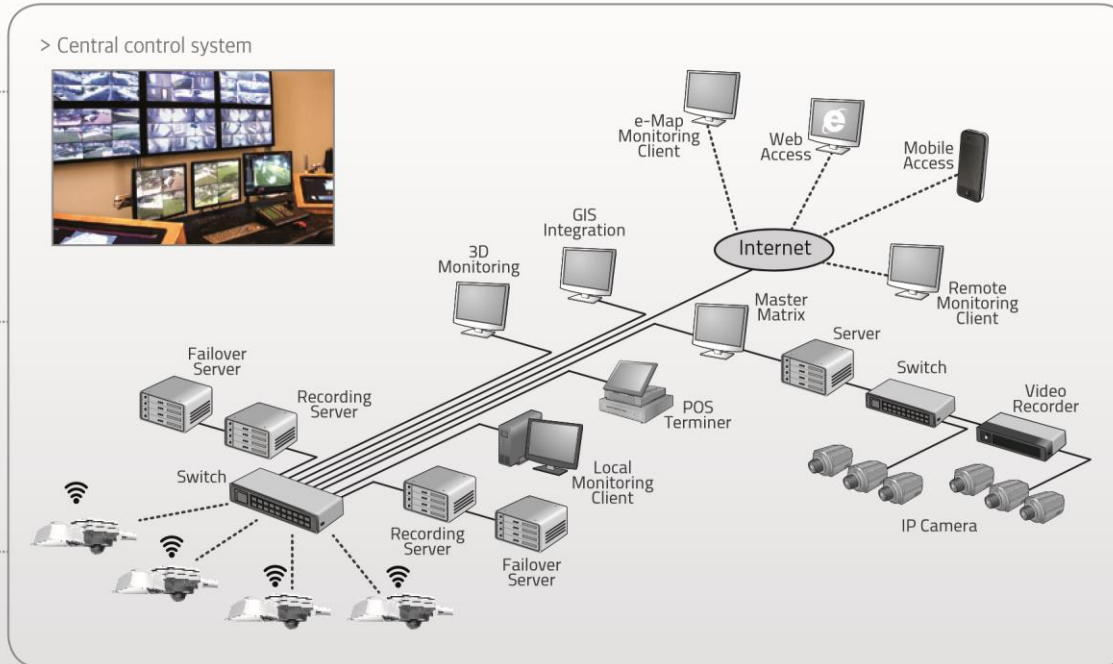
> Roadway



> Stadium



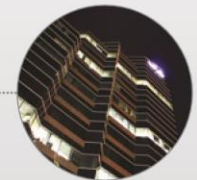
> Port



> City Facility



> Industrial Complex



> Building

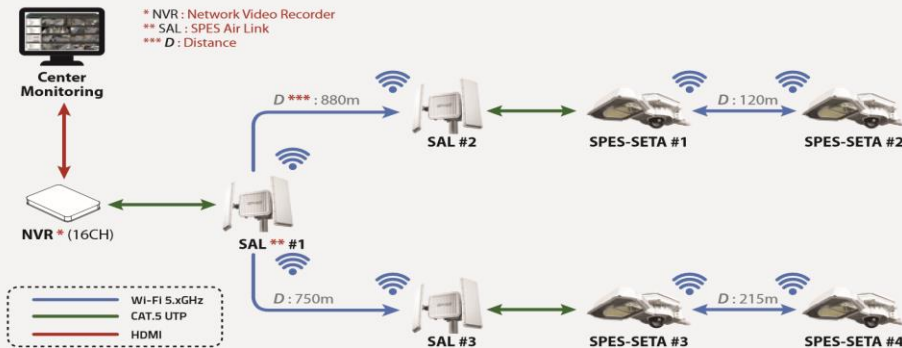
Case Study Toshkent Project

Case Study

> Toshkent Project

This project consists of a road situation monitoring system where after installing 4 units of SPES-SETA to the main road stretching from the city center to the airport, they were grouped together into a network. The installation models include the SPES-SETA 100W products, and are equipped with a 125 lm/W luminous efficiency streetlight and PTZ dome camera function, and the filmed video data is transmitted via Wi-Fi transmission in real time to the control center.

> Toshkent Project System Diagram



> Installation and Monitoring Images



Installation



Monitoring (Daytime)



Monitoring (Nighttime)

CASE STUDIES – SUPPLEMENTAL DOCUMENTS

- USA Round Rock City Texas
- USA Yankee Stadium NY
- USA Mariner Stadium Washington
- USA Seahawks Washington
- Malaysia Duke Highway
- Malaysia NPE Highway
- Korea Centum City Highway

VIDEO LINKS

Round Rock Texas

<https://vimeo.com/144466749>

Yankee Stadium

<https://youtu.be/zn2jER6kUfl>

Seattle Mariners

<https://youtu.be/Kic2CFXqyb8>

Around the world

<https://drive.google.com/file/d/0B4YV6cZ93CSdd05XU0xhYUNVdFk/view>



Stephen Gould

Robert Stahler

Phone: +1 - 216 570 7414

Email: rjstahler@rjstahler.com

Cleveland Office:

4350 Renaissance Pkwy, Cleveland, Ohio 44128

www.stephengould.com